

Easy Dry™ culture media

Liofilchem® Easy Dry™ culture media are absorbent pads impregnated with a sterile, dehydrated culture medium. Each pad is preplated in a Petri dish and is immediately ready to use after pouring sterile distilled or deionized water on it. Easy Dry™ pads are optimal for the examination of large sample volumes by the membrane filter method.

ref. 87500 Easy Dry™ - Chromatic Coliform ISO

ref. 87501 Easy Dry™ - Plate Count + TTC

ref. 87502 Easy Dry™ - Violet Red Bile Glucose

ref. 87503 Easy Dry™ - TBX

ref. 87504 Easy Dry™ - m-Endo LES

ref. 87505 Easy Dry™ - Pseudomonas CN

ref. 87506 Easy Dry™ - m-Faecal Coliform

ref. 87507 Easy Dry™ - Slanetz Bartley

ref. 87508 Easy Dry™ - Bile Aesculin Azide

ref. 87509 Easy Dry™ - Streptococcal KF + TTC

ref. 87510 Easy Dry™ - Sabouraud Dextrose

ref. 87511 Easy Dry™ - M-Green Yeast & Mould

ref. 87512 Easy Dry™ - Tryptic Soy

ref. 87513 Easy Dry™ - Yeast Extract

ref. 87514 Easy Dry™ - MacConkey

ref. 87515 Easy Dry™ - Chromatic Salmonella

ref. 87516 Easy Dry™ - C-EC MF

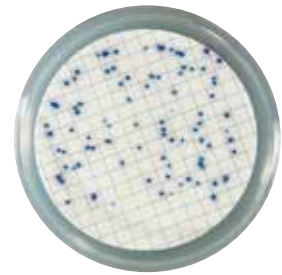
ref. 87517 Easy Dry™ - Tergitol

ref. 87518 Easy Dry™ - Tergitol + TTC

ref. 87519 Easy Dry™ - Chromatic Coli Coliform

ref. 87520 Easy Dry™ - Orange Serum

ref. 87521 Easy Dry™ - Wort



Escherichia coli



Escherichia coli



Klebsiella pneumoniae



Liofilchem®



Easy Dry™ culture media

PREPARATION

1. Cut open a bag and remove the number of Easy Dry™ plates needed.
2. Moisten the pad contained in the Petri dish with 2.2 ml of sterile distilled or deionized water.
3. Wait 5 minutes before using.

TEST PROCEDURE

Filter the sample through a filter membrane (0.45 µm pore diameter). Transfer the membrane into a plate containing a just rehydrated pad. Incubate aerobically at $36 \pm 2^\circ\text{C}$ for 18-24 hours.

INTERPRETING RESULTS

After incubation observe the color of the colonies and interpret the results as indicated in the ID table.

STORAGE

Store at 10-25°C away from light.

SHELF LIFE

2 years.