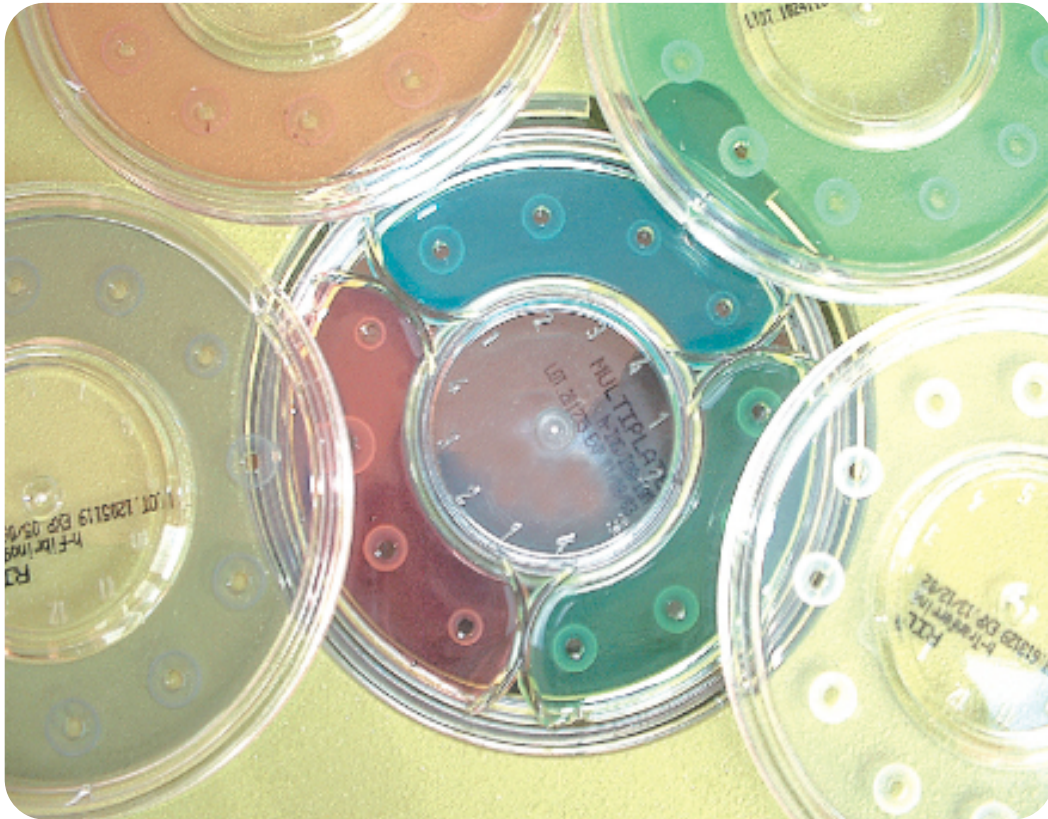


Radial Immunodiffusion Plates

for plasma protein detection



- ✓ Cost effective
- ✓ Easy to use
- ✓ Results in 48 hours
- ✓ Available in 17 configurations



www.liofilchem.net

Radial Immunodiffusion Plates

Description	Packaging	ref.
EASY RID h-IgG	1 x 12 Tests	93001
EASY RID h-IgA	1 x 12 Tests	93002
EASY RID h-IgM	1 x 12 Tests	93003
EASY RID h-C3c	1 x 12 Tests	93004
EASY RID h-C4	1 x 12 Tests	93005
EASY RID h- Transferrin	1 x 12 Tests	93006
EASY RID h- Albumin	1 x 12 Tests	93007
EASY RID h- Apolipoprotein A1	1 x 12 Tests	93008
EASY RID h- Apolipoprotein B	1 x 12 Tests	93009
EASY RID h- Alpha-1-acid Glycoprotein	1 x 12 Tests	93010
EASY RID h- Fibrinogen	1 x 12 Tests	93011
EASY RID h- Antithrombin III	1 x 12 Tests	93012
EASY RID h-IgG Kappa light chain	1 x 12 Tests	93013
EASY RID h-IgG Lambda light chain	1 x 12 Tests	93014
EASY RID h- Alfa 1 Antitrypsin	1 x 12 Tests	93015
EASY RID h- Ceruloplasmin	1 x 12 Tests	93016
EASY RID h- Haptoglobin	1 x 12 Tests	93018
Ruler for measuring the diameter		E20316

Radial Immunodiffusion Multiplates

Description	Packaging	ref.
Multiplate h-IgG/IgA/IgM	3 sectors x 4 Test	93104
Multiplate h-C3c/C4	2 sectors x 6 Test	93106
Multiplate h-ApoA1/ApoB	2 sectors x 6 Test	93110
Multiplate h-Kappa chain / Lambda chain	2 sectors x 6 Test	93115

Double Immunodiffusion Plates

Description	Packaging	ref.
Bence Jones Test Urine	20 x 2 Test	93201

Protein Control Serum

Description	Packaging	ref.
RID CONTROL SERUM IgG + IgA + IgM + C3c + C4 + Transferrin + α 1 Acid Glycoprotein + Ig k chain + Ig λ chain + Ceruloplasmine + α 1 Antitrypsin + Albumin + Haptoglobin + Apo A + Apo B	4 x 0.5 mL	940010



Via Scozia zona ind.le, 64026 Roseto degli Abruzzi (Te) Italy
Tel. +39 0858930745 Fax +39 0858930330



ref. 6550516
Rev. 2 - 04.03.2013
© Liofilchem 2013
Printed in Italy

www.liofilchem.net liofilchem@liofilchem.net