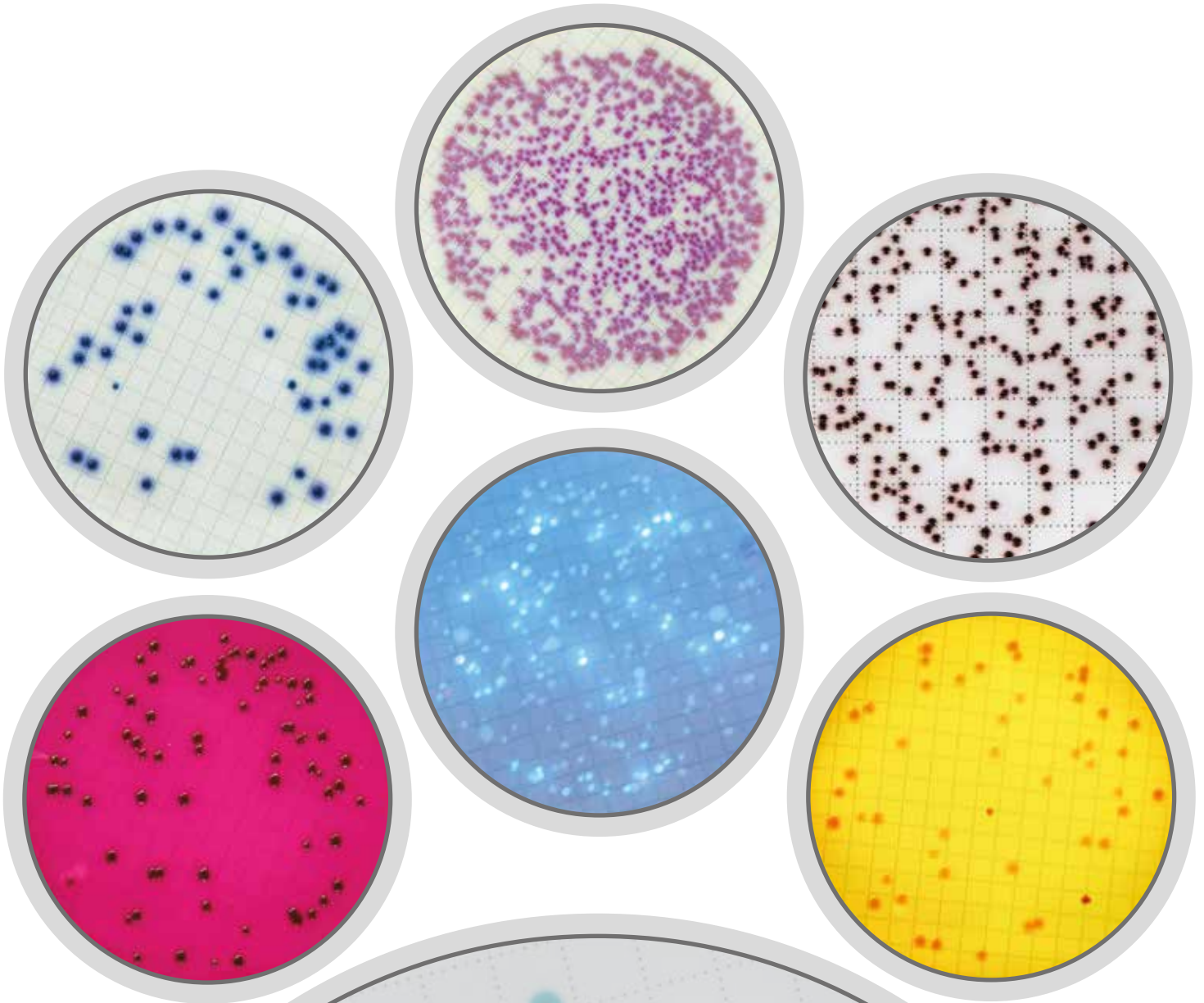


Liofilchem® Easy Dry™

Adsorbent pads with culture media for microbiological control of water and beverage by the membrane filter method



Microbiology Products since 1983

Liofilchem® Easy Dry™

Liofilchem® Easy Dry™ are adsorbent pads impregnated with a sterile, dehydrated culture media. Once they are moistened with sterile distilled or deionized water, they are ready to use. **Easy Dry™** pads are optimal for the examination of large sample volumes by the membrane filter method.



PREPARATION

1. Open a bag and remove the number of **Easy Dry™** plates needed.
2. Wet the pad with 2.2 ml of sterile distilled or deionized water.
3. Wait 5 minutes before using.

TEST PROCEDURE

Filter the sample through a filter membrane (0.45 µm pore diameter). Transfer the membrane into a plate containing a just rehydrated pad. Incubate the plate at the appropriate temperature, atmosphere and time.

INTERPRETING RESULTS

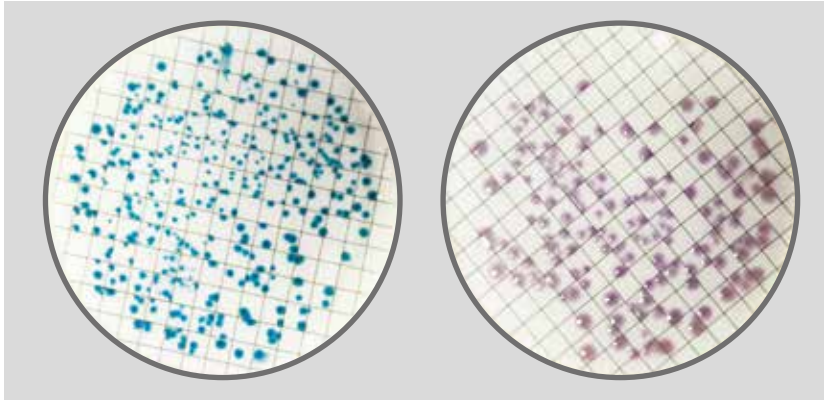
After incubation observe the colonies and interpret the results as indicated in the ID table.

STORAGE

Store at 10-25°C away from light.

SHELF LIFE

2 years.

*Escherichia coli**Klebsiella pneumoniae*

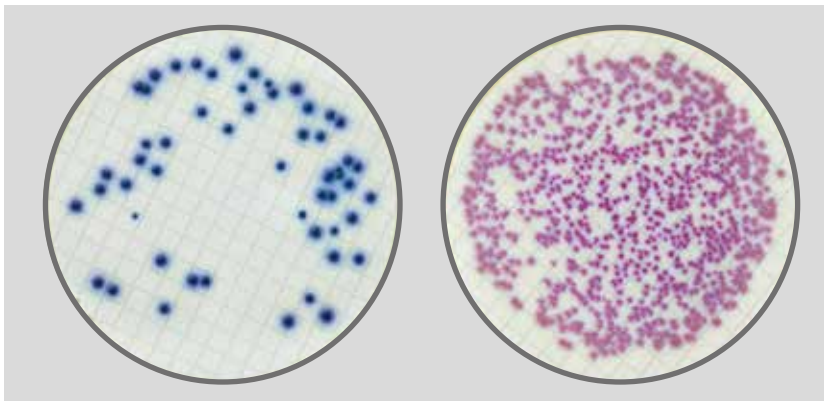
Chromogenic selective medium for the detection and enumeration of β -glucuronidase positive *Escherichia coli* and **coliform bacteria** in raw materials, water, waste water, beverages, foods and other products.

Results

Escherichia coli colonies appear green.

Other **coliform bacteria** appear mauve.

Packaging	ref.
100 pads	87519

*Escherichia coli**Enterobacter aerogenes*

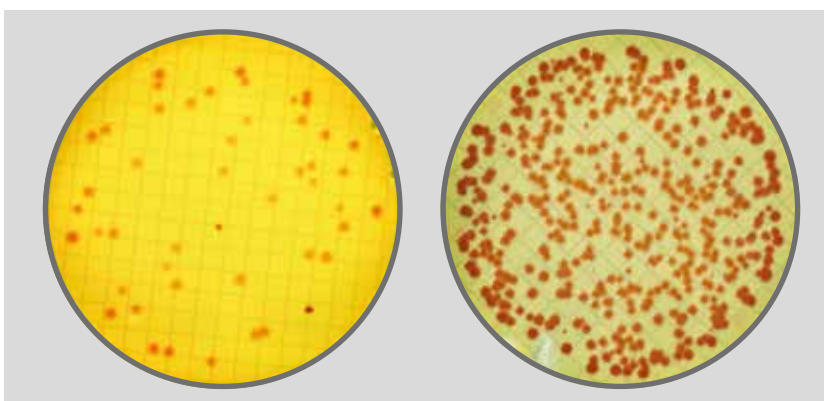
Chromogenic selective medium for the detection and enumeration of *Escherichia coli* and **coliform bacteria** in water, according to ISO 9308-1.

Results

Escherichia coli colonies appear dark-blue to violet.

Other **coliform bacteria** appear pink to red.

Packaging	ref.
100 pads	87500

*Escherichia coli**Enterobacter aerogenes*

Chromogenic selective medium for detection and enumeration of *Escherichia coli* and other **coliform bacteria** in water.

Results

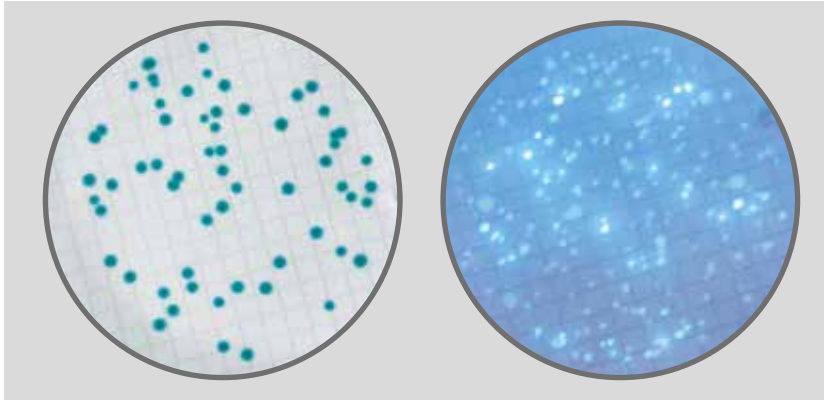
Escherichia coli colonies appear yellow -orange.

Enterobacter/Klebsiella colonies appear yellow.

Other **enterobacteria** colonies appear dark red.

Packaging	ref.
100 pads	87518

Liofilchem® Easy Dry™ C-EC MF



Escherichia coli

Escherichia coli
(under UV light)

Chromogenic selective medium used to assess microbial water quality. Its formula contains chromogenic and fluoregenic substrates for detection and enumeration of *Escherichia coli*.

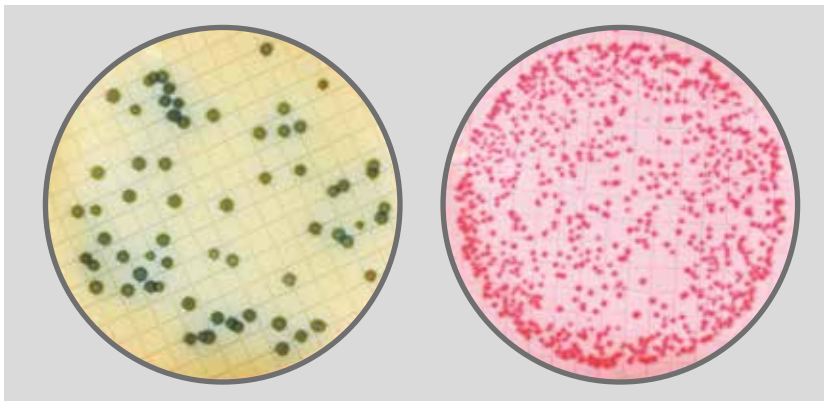
Results

Coliform colonies appear blue-green.

Escherichia coli colonies appear fluorescent under UV light.

Packaging	ref.
100 pads	87516

Liofilchem® Easy Dry™ m-Faecal Coliform



Escherichia coli

Salmonella typhimurium

Selective medium for detection of bacteria of faecal origin from other coliforms in water samples according to the recommendations of APHA.

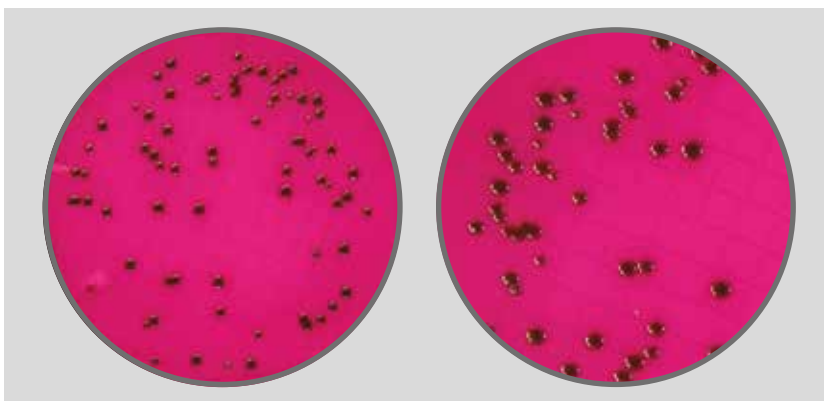
Results

Escherichia coli colonies appear green-blue to dark blue.

Other **coliform bacteria** appear pink-red.

Packaging	ref.
100 pads	87506

Liofilchem® Easy Dry™ m-Endo LES



Escherichia coli

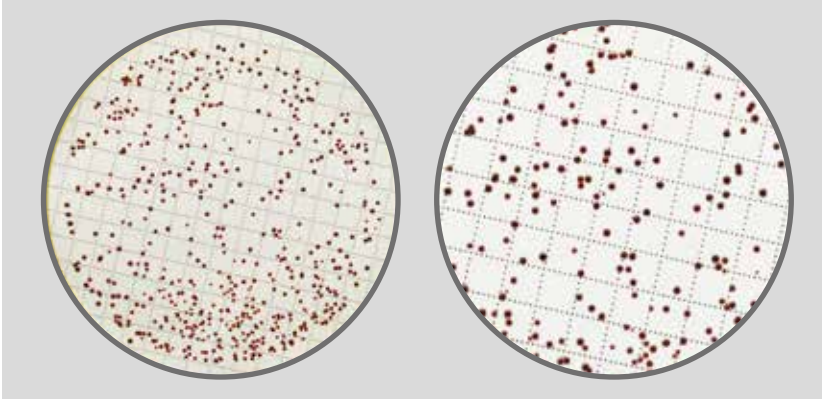
Selective medium for the detection and enumeration of **coliforms** in water samples and drinking water in accordance with the recommendations of APHA.

Results

Coliform bacteria colonies appear pink to dark-red with a metallic green sheen.

Packaging	ref.
100 pads	87504

Liofilchem® Easy Dry™ Slanetz Bartley



Enterococcus faecalis

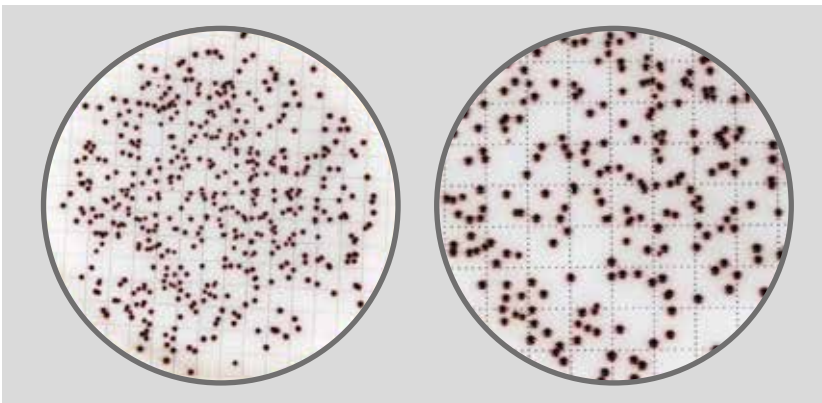
Selective medium for the detection and enumeration of **Enterococci** in water and foodstuffs, according to ISO 7899-2 and APHA.

Results

Enterococci colonies appear red, maroon or pink.

Packaging	ref.
100 pads	87507

Liofilchem® Easy Dry™ Bile Aesculin Azide



Enterococcus faecalis

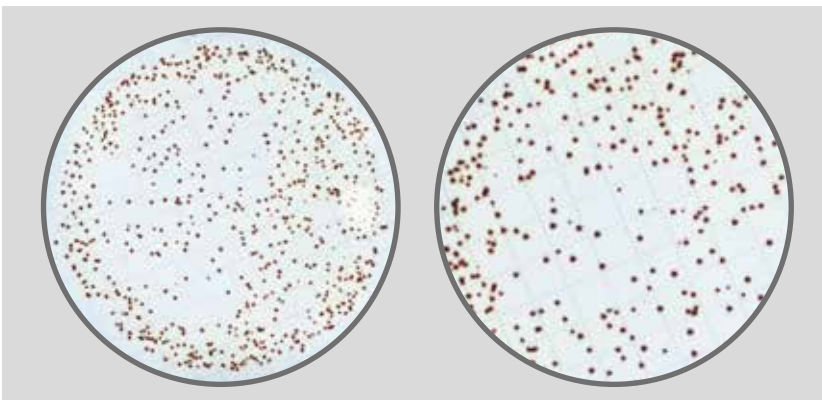
Selective medium for confirmation and enumeration of **Enterococci** in water and foodstuffs, according to ISO 7899-2.

Results

Enterococci colonies appear black or dark brown surrounding by black halo.

Packaging	ref.
100 pads	87508

Liofilchem® Easy Dry™ Streptococcal KF + TTC



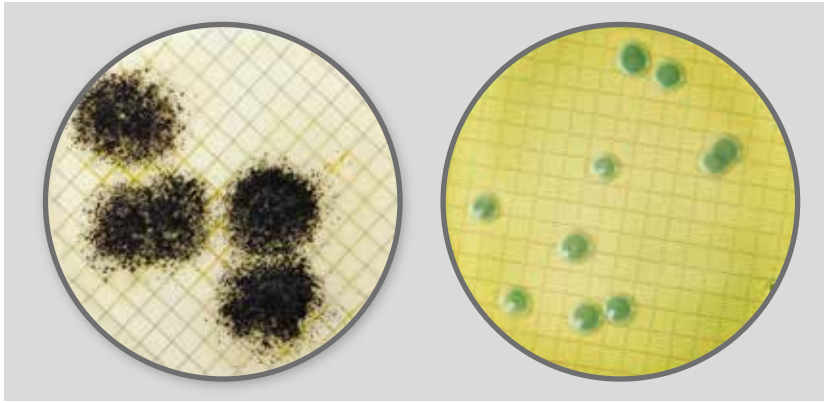
Enterococcus faecalis

Selective medium for the detection and enumeration of **Enterococci** in water and foodstuffs, according to the recommendations of APHA.

Results

Enterococci colonies appear red or pink.

Packaging	ref.
100 pads	87509

*Aspergillus niger**Saccharomyces cerevisiae*

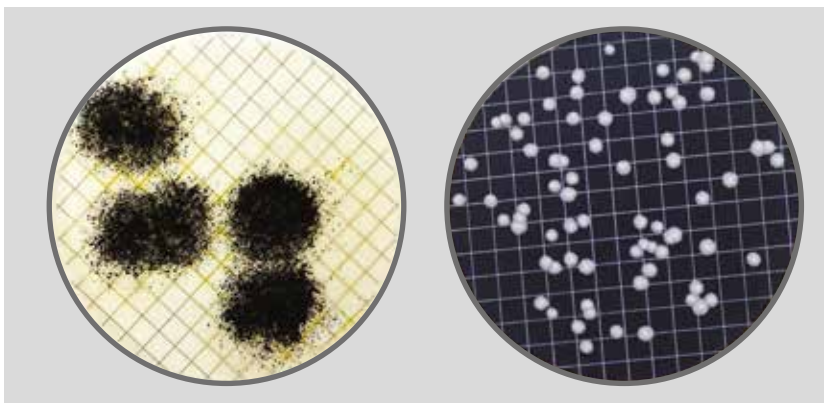
Selective medium for the detection and enumeration of **yeast and mould** in wine, soft drinks, concentrates, sugar products and potable water.

Results

Mould colonies appear filamentous.

Yeast colonies appear green and opaque.

Packaging	ref.
100 pads	87511

*Aspergillus niger**Candida krusei*

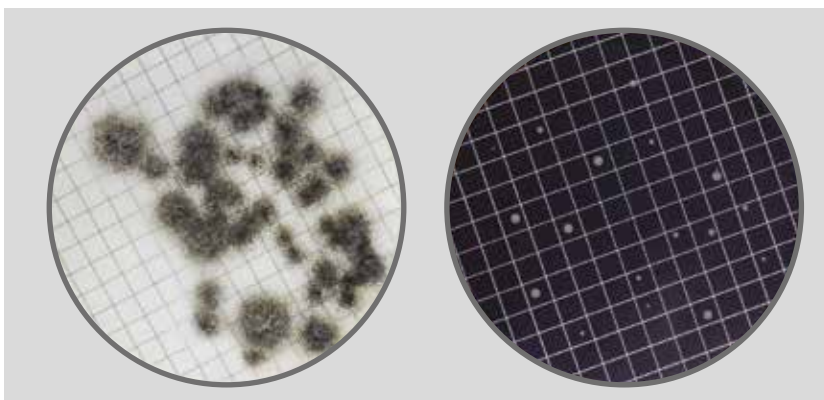
Selective medium for the detection and enumeration of **pathogenic and non-pathogenic yeast and mould** from clinical and nonclinical specimens, according to ISO 11133.

Results

Mould colonies appear filamentous.

Yeast colonies appear whitish and opaque.

Packaging	ref.
100 pads	87510

*Aspergillus niger**Saccharomyces cerevisiae*

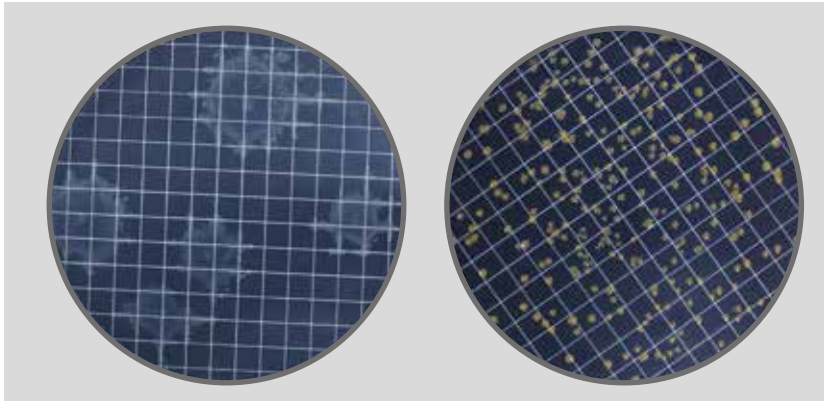
Selective medium for detection and enumeration of microorganisms associated with spoilage of citrus fruits and derivatives, such as lactic acid and acetic acid **bacteria, yeasts and moulds**, in accordance with the recommendations of APHA.

Results

Determine the microbial count and report as colony forming unit (CFU) per ml of test sample.

Packaging	ref.
100 pads	87520

Liofilchem® Easy Dry™ Tryptic Soy



Bacillus cereus

Staphylococcus aureus

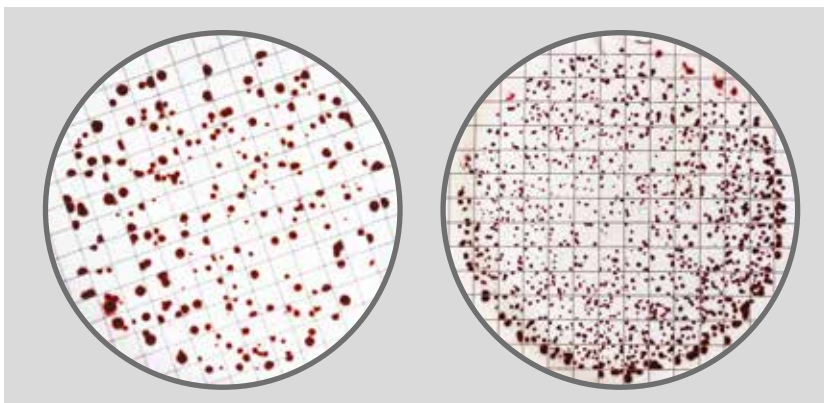
No selective medium for the detection and enumeration of **bacteria and fungi** from nonclinical samples.

Results

The total aerobic microbial count (TAMC) is considered to be equal to the number of CFU found.

Packaging	ref.
100 pads	87512

Liofilchem® Easy Dry™ Plate Count + TTC



Escherichia coli

Enterobacter aerogenes

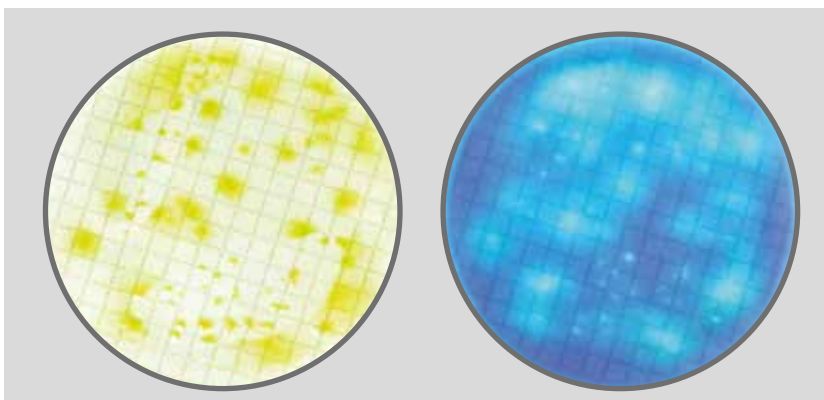
Selective medium for the detection and enumeration of the **total microbial content** from food and animal feed, water and other materials.

Results

Count colonies on all plates containing 15-300 colonies. Report the count as CFU per ml of sample allowing for dilution factors.

Packaging	ref.
100 pads	87501

Liofilchem® Easy Dry™ Pseudomonas CN



Pseudomonas aeruginosa

Pseudomonas aeruginosa
(under UV light)

Selective medium for the detection and enumeration of *Pseudomonas aeruginosa* in water, based on pyocyanin production, according to ISO 16266.

Results

Examine the membranes for growth and fluorescence under UV light after 24-48 h.

Packaging	ref.
100 pads	87505

Liofilchem® Easy Dry™



ref. 87500 Easy Dry™ - Chromatic Coliform ISO

ref. 87501 Easy Dry™ - Plate Count + TTC

ref. 87502 Easy Dry™ - Violet Red Bile Glucose

ref. 87503 Easy Dry™ - TBX

ref. 87504 Easy Dry™ - m-Endo LES

ref. 87505 Easy Dry™ - Pseudomonas CN

ref. 87506 Easy Dry™ - m-Faecal Coliform

ref. 87507 Easy Dry™ - Slanetz Bartley

ref. 87508 Easy Dry™ - Bile Aesculin Azide

ref. 87509 Easy Dry™ - Streptococcal KF + TTC

ref. 87510 Easy Dry™ - Sabouraud Dextrose

ref. 87511 Easy Dry™ - M-Green Yeast & Mold

ref. 87512 Easy Dry™ - Tryptic Soy

ref. 87513 Easy Dry™ - Yeast Extract

ref. 87514 Easy Dry™ - MacConkey

ref. 87515 Easy Dry™ - Chromatic Salmonella

ref. 87516 Easy Dry™ - C-EC MF

ref. 87517 Easy Dry™ - Tergitol

ref. 87518 Easy Dry™ - Tergitol + TTC

ref. 87519 Easy Dry™ - Chromatic Coli Coliform

ref. 87520 Easy Dry™ - Orange Serum