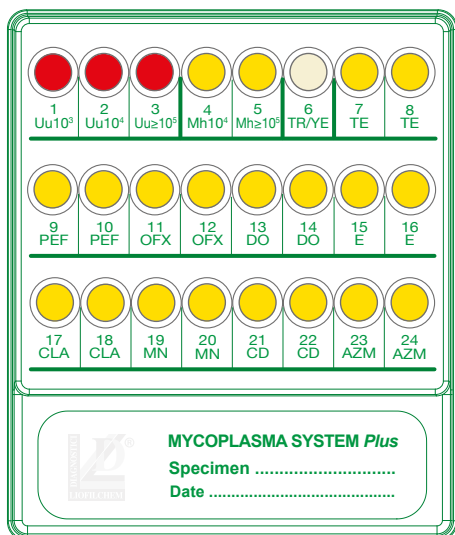


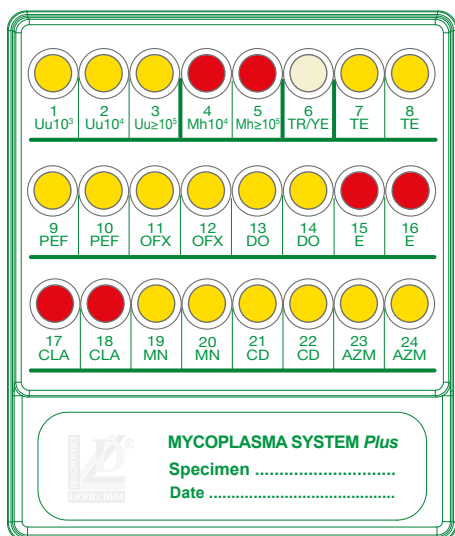
MYCOPLASMA SYSTEM *Plus*

Count, Identification and Susceptibility Testing of urogenital mycoplasmas and *Candida* spp./*Trichomonas vaginalis* directly from Clinical Specimens



★ Clinical Specimens

Vaginal swab, Urethral swab,
Rectal swab, Seminal fluid



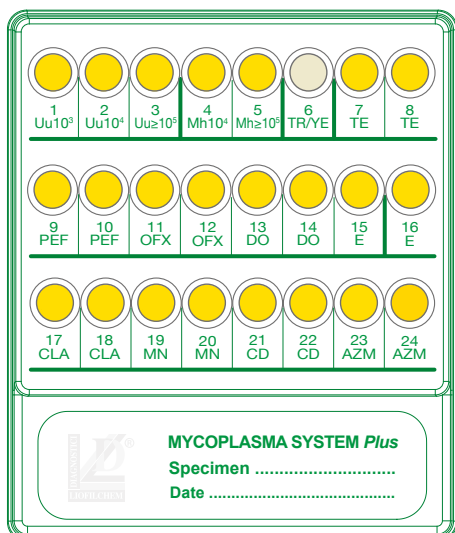
★ Urogenital mycoplasmas

Count/identification

Ureaplasma urealyticum, *Mycoplasma hominis*

Susceptibility Testing (double concentration)

Tetracycline, Pefloxacin, Ofloxacin
Doxycycline, Erythromycin, Clarithromycin,
Minocycline, Clindamycin, Azithromycin



★ Direct Microbial Identification

(microscopic observation)

Candida spp.,
Trichomonas vaginalis

★ Benefits

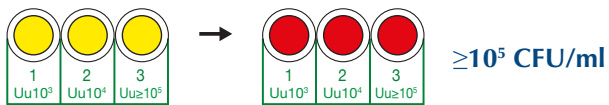
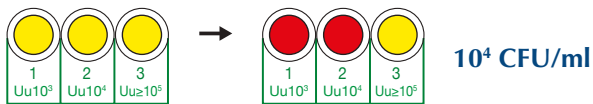
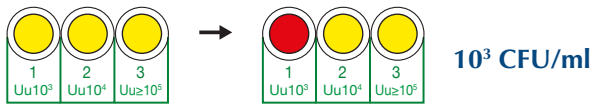
- ✓ Complete diagnosis
- ✓ Save time and labor with direct testing
- ✓ Results in 24-48 hours
- ✓ Clear and well defined color changes
- ✓ Easy interpretation
- ✓ Automatic reading available

MYCOPLASMA SYSTEM *Plus*

RESULTS

Identification and count

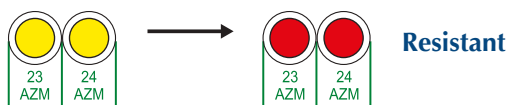
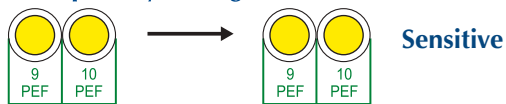
Ureaplasma spp.



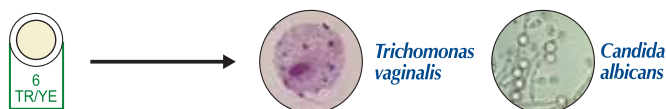
Mycoplasma hominis



Susceptibility Testing (double concentration)



Microscopic observation (400x)



DESCRIPTION	PACKAGING	REF.
MYCOPLASMA SYSTEM <i>Plus</i>	20 tests	72592
MYCOPLASMA SYSTEM <i>Plus</i>	4 tests	79592
VASELINE OIL DROPPERS	10x10 mL	87006
MYCOPLASMA TRANSPORT <i>Broth</i>	20x6 mL	20158

TEST PROCEDURE



1

- Dip the swab into the vial of physiological solution and wait 5 minutes. Carefully squeeze the swab against the vial wall.



2

- Dispense 0.2 mL of clinical sample suspension into each well of the system.



3

- Cover all the wells with 1 drop of Vaseline Oil, except 6-TR/YE well. Cover the system with the lid provided and incubate at 36±1°C for 18-24 hours.



4

- Confirm *Trichomonas vaginalis* and *Candida* spp. by taking a drop from well 6-TR/YE and watch at the microscope (400x).



5

- Watch for the color change of the wells and interpret the results.



6

- Note down the test results on the form provided in the kit, or read and interpret with **automatic readers**.